



Universitas
Sumatera Utara

Transformation
Towards the Ultimate



REPORT

USU'S TRACER STUDY OF 2021 GRADUATES

University of Sumatera Utara
2022



Access to USU's Tracer Study

Tracer study is carried out in order to identify the whereabouts of alumni after graduating from college. The purpose of this study is to evaluate the process and results of lectures, to improve and guarantee the quality of learning at the University of North Sumatra.

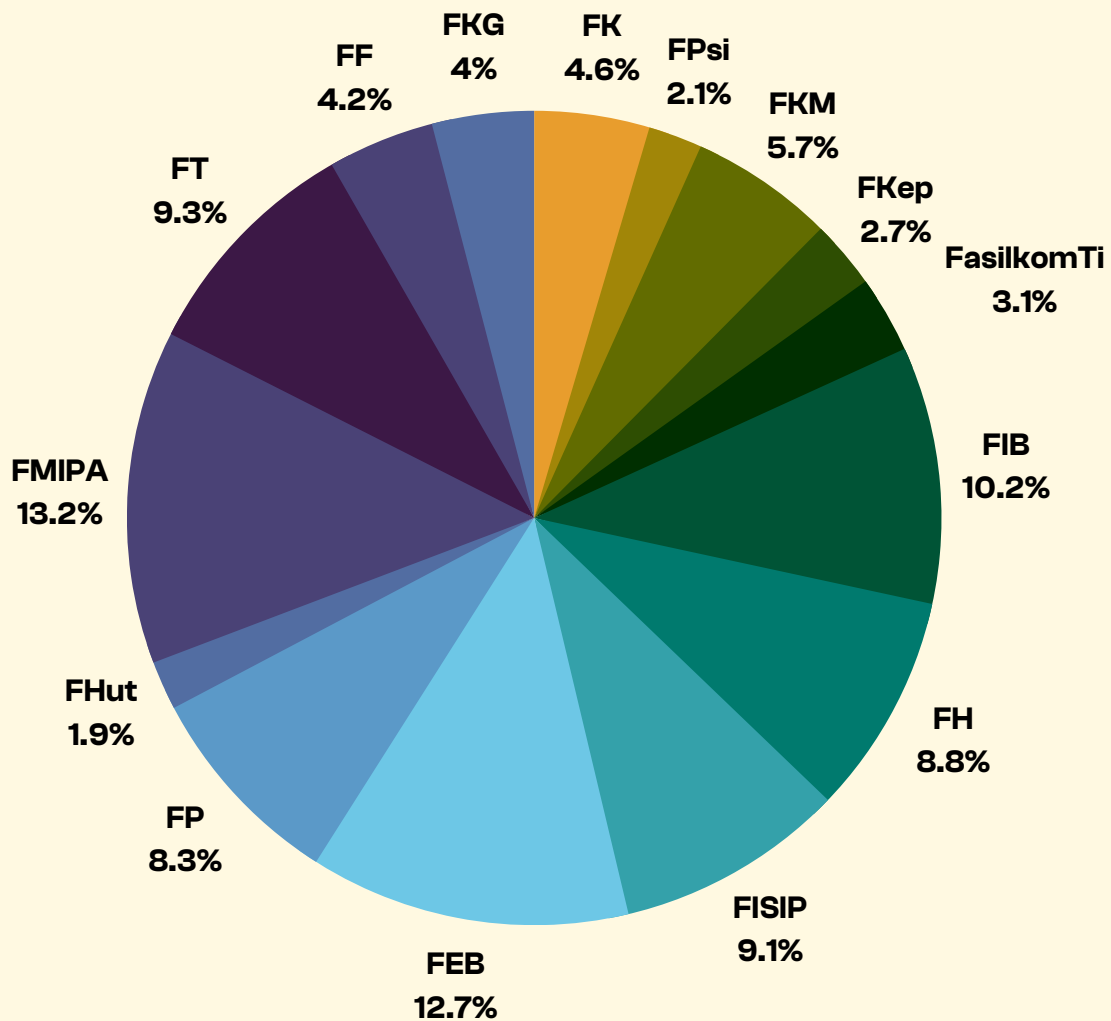


tracerstudy.usu.ac.id



(Page of tracerstudy.usu.ac.id)

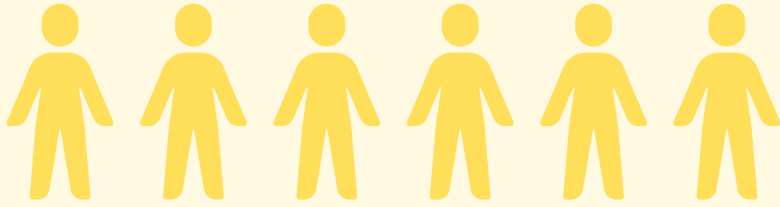
Number of Graduates in 2021



Number of Graduates

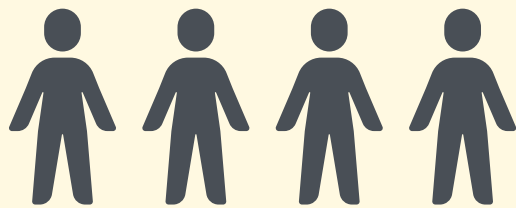
5143

Response Rate of Tracer Study



Have filled the
Tracer Study

58,93%



Have yet to fill the
Tracer Study

41,07%

Up to this date, out of **5143** graduates of 2021, a total of **3031** graduates (**58.93%**) have filled the Tracer Study, and the remaining **2112** graduates (**41.07%**) are yet to fill the Tracer Study.

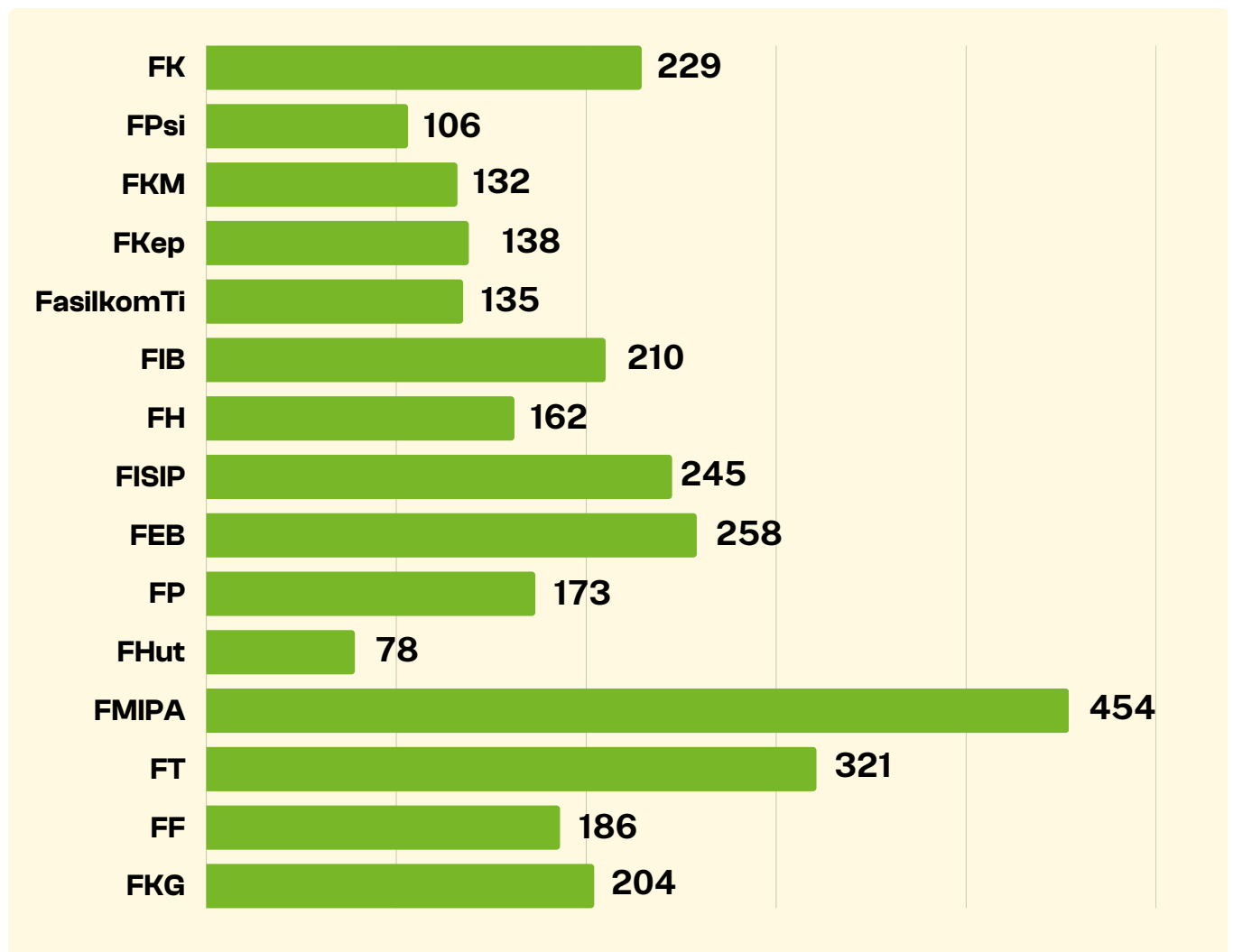


Total Respondents

Total :

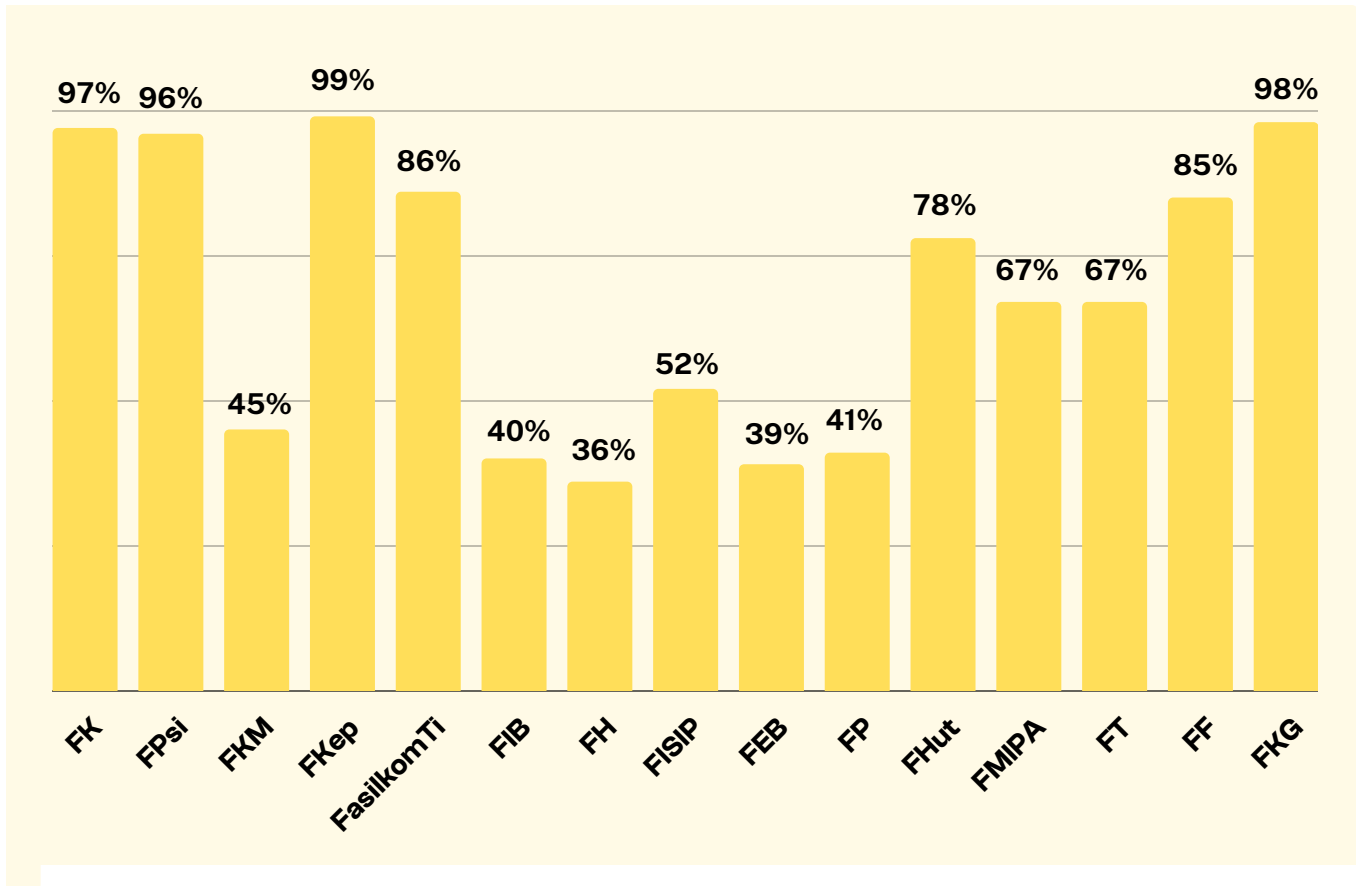
3031

Data per faculty.



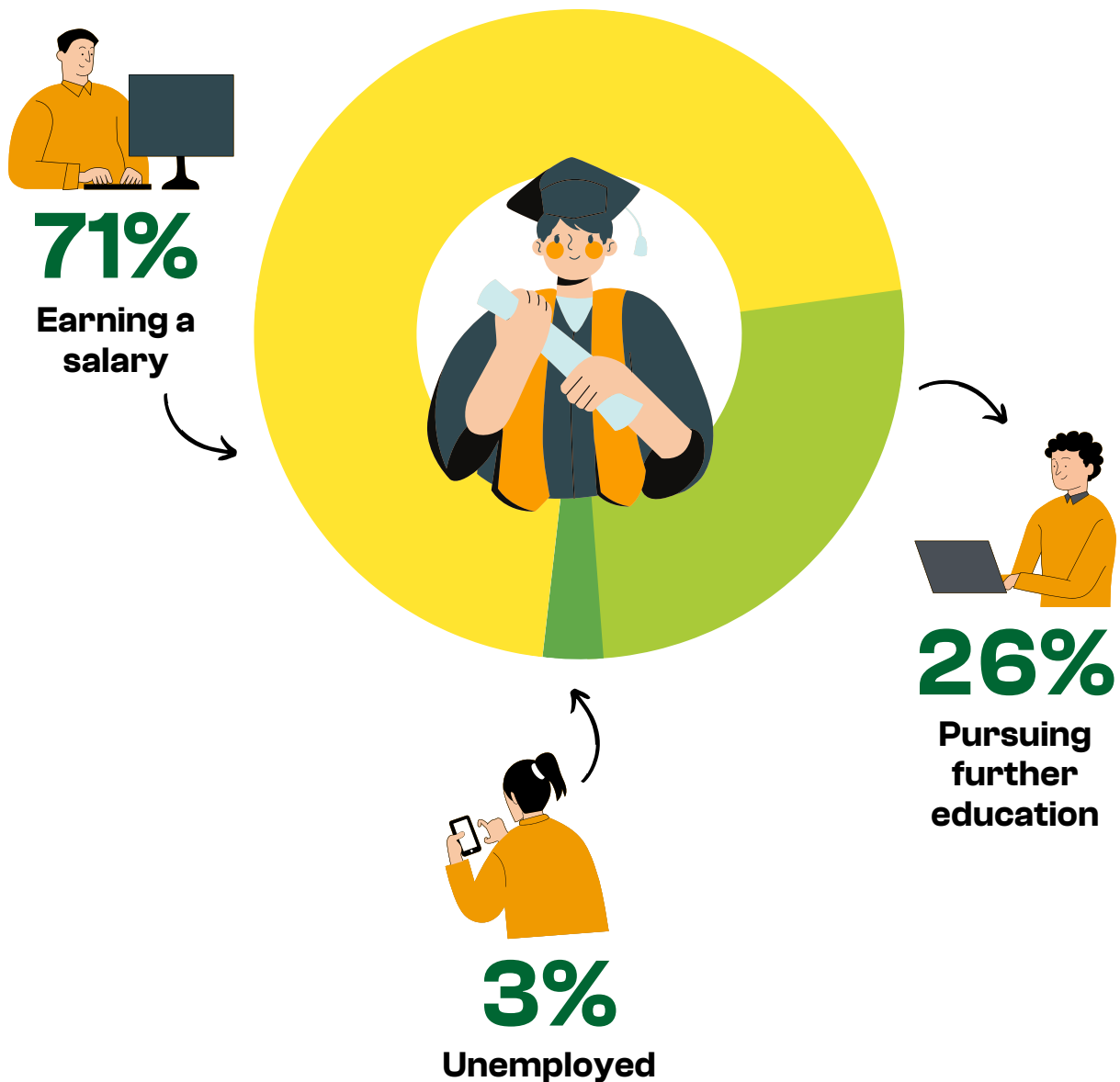
Response Rate Per Faculty

From the total respondents compared to total graduates.



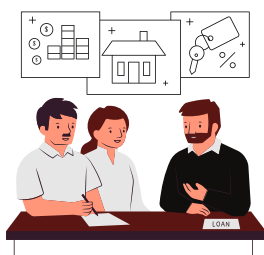
The Graduates University of Sumatera Utara

From **3031** respondents, **71%** of the respondents are earning a salary as of now, while **26%** are pursuing further education and the remaining **3%** are still unemployed.

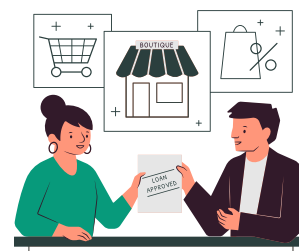


Employment Category

Out of **2143** graduates that earning a salary, a total of **93%** are employees and the remaining **7%** are entrepreneurs.



Employee

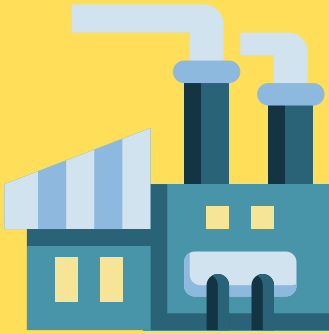


Wirausaha



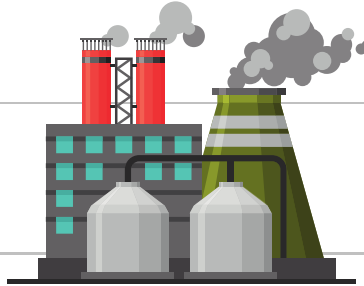
First Employment Category

83%



**National
Companies**

12%



**Multinational
Companies**

4%



**International
Companies**



Graduates Working as Employee and Entrepreneur

7%



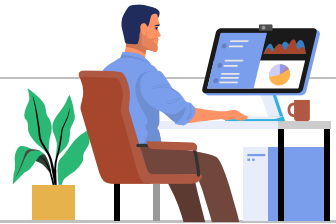
Entrepreneur

81%



Working in The
Major Field

12%



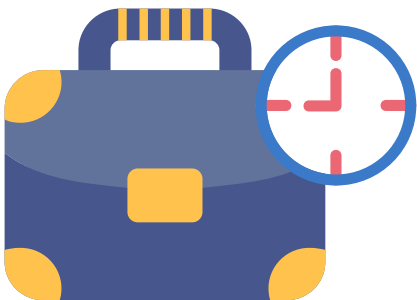
Working Outside
The Major Field

Catatan :

The respondents are amounted to **2134** respondents.

Working Schedule

9%



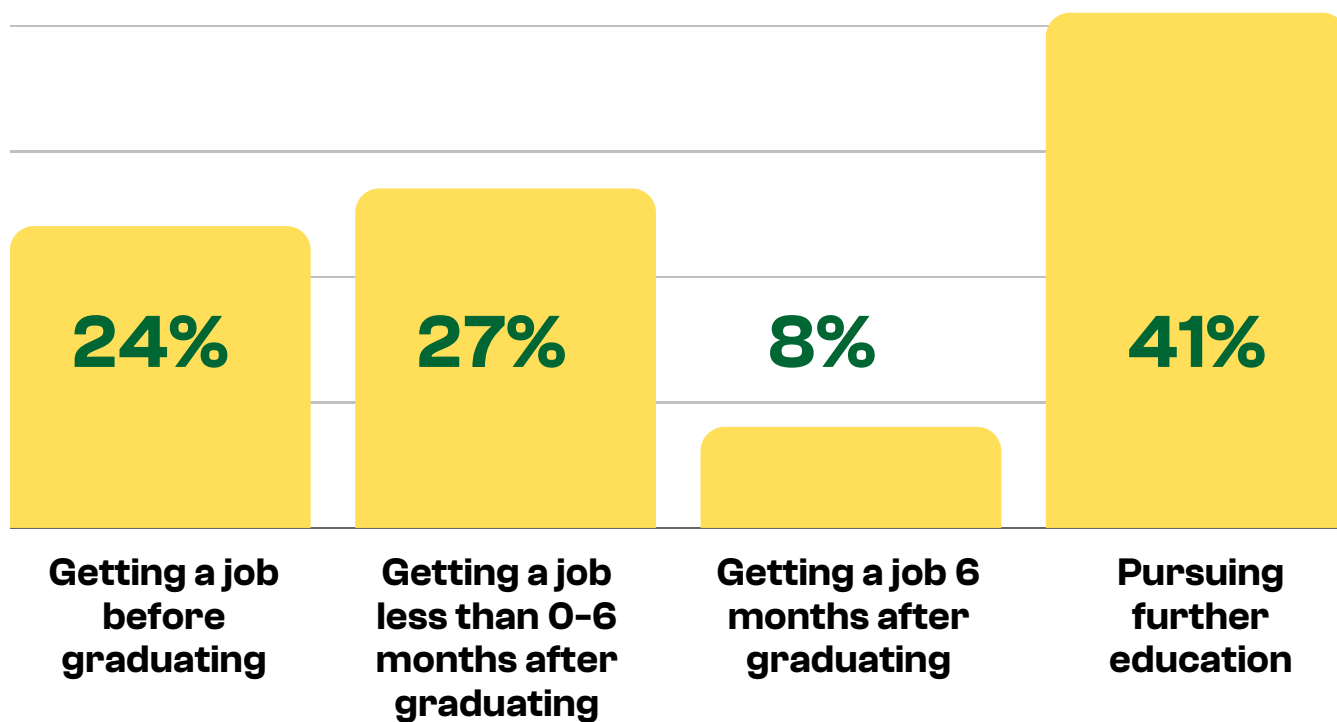
Full Time

91%

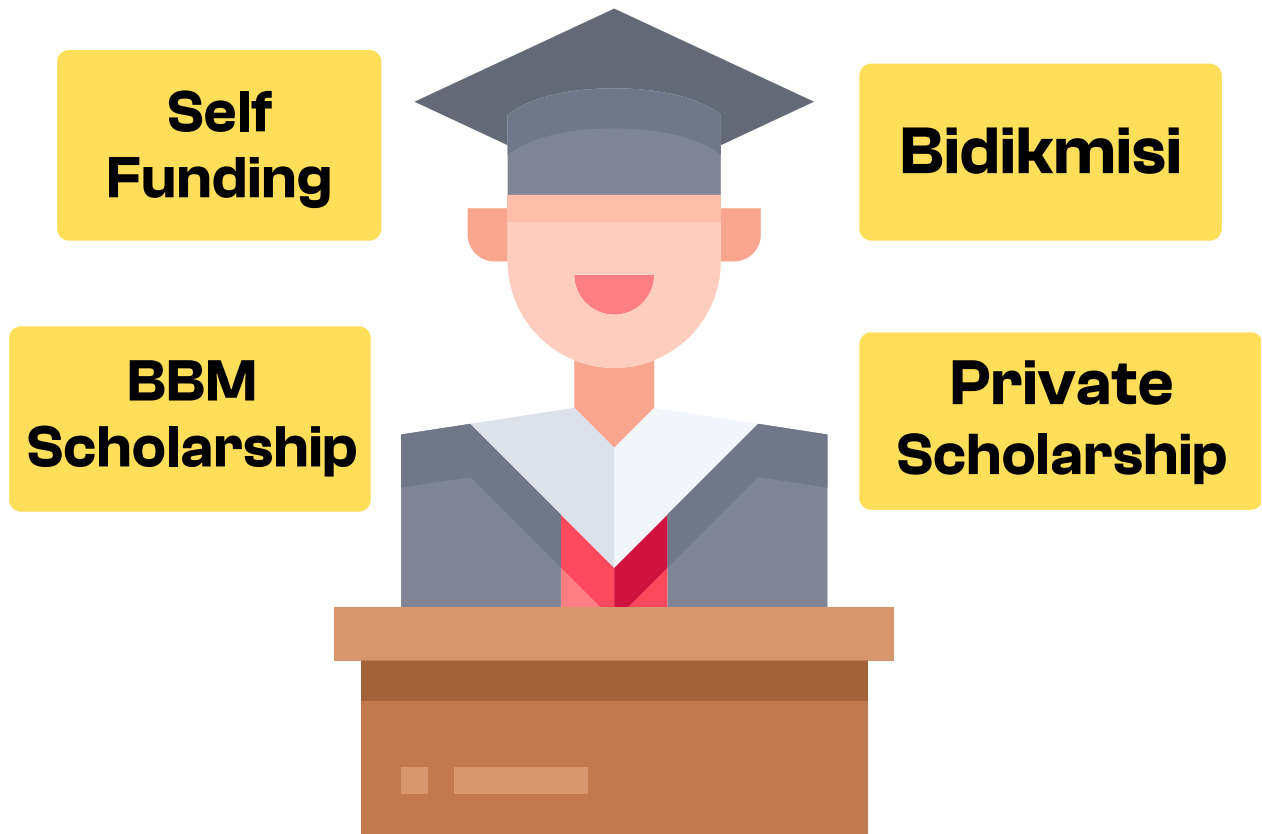


Part Time

The Waiting Period



Source of Tuition Funding





**Universitas
Sumatera Utara**



**Transformation
Towards the Ultimate**

www.usu.ac.id